

# KP S

## Chlorinated solvent vacuum cleaning machines

The cleaning machines of the KP S series use chlorinated solvents. In the past few years the regulations have limited their use more and more, however, thanks to their vacuum-sealed washing cycle to  $-999$  mbar, their great flexibility of use, the superb equipment as standard and the wide range of available accessories, the machines of the KP S series ensure compliance with the most stringent regulations and the best quality results on the goods treated



The vacuum treatment allows cutting down cycle times and the power used by the system. The saving in cycle time in comparison with an atmospheric cycle washing machine allows increasing productive capacity by 100% and reducing electrical consumption by 50%.

## The future cleaning . Now

The logo for iFP, consisting of the letters 'iFP' in a bold, blue, sans-serif font.

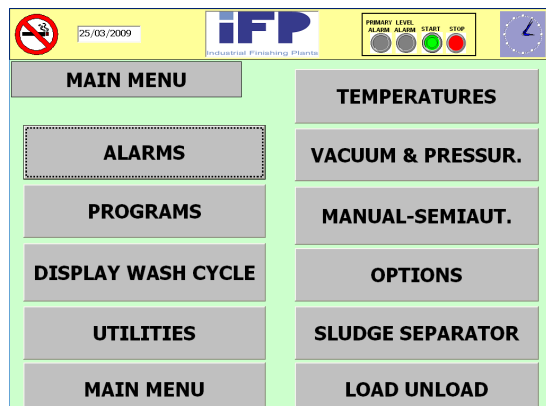
### Standard equipment

- Construction totally in stainless steel
- Vacuum-sealed system
- High pressure spraying pumps
- Cryogenic trap system
- Coarse filter
- Two solvent tanks
- Activated carbon filter
- Touch screen control panel
- Internet remote service



### Available accessories

- Solvent third tank
- Rust inhibitor tank
- High pressure spraying pumps
- Ultrasound transducers
- Additional filters
- Sludge separator
- Automatic closing door
- Automatic loads feeding systems
- Video service via internet



### Main characteristics

- Wholly vacuum-sealed treatment
- Continuous solvent filtration
- Continuous distillation
- Continuous emulsion separation
- Continuous separation of the distillation sludge
- Constant survey of operating conditions
- Easy access to components for maintenance



## Applications

Turned parts  
 Pressed and bent parts  
 Diecasted and machined parts  
 Springs  
 Hydraulic parts  
 Valves  
 Taps and Fittings  
 Return bends and manifolds  
 Heat exchangers  
 Automotive  
 Sintered parts  
 Watch making  
 Jewellery  
 Medical



Model	Load dimensions (mm)	Load weight ( kg )	Overall dimensions (mm)	Cycles/hour
<b>KP 20</b>	150 * 250 * 130 h	20	1200 * 1200 * 1800 h	4-8
<b>KP 50</b>	450 * 300 * 200 h	50	1800 * 1800 * 2300 h	4-8
<b>KP 100</b>	450 * 600 * 200 h	100	1900 * 2200 * 2800 h	4-8
<b>KP 150</b>	450 * 900 * 200 h	150	2400 * 2200 * 2800 h	4-8
<b>KP 200</b>	450 * 1200 * 200 h	200	2400 * 2400 * 2800 h	4-8
<b>KP 400</b>	450 * 1200 * 400 h	400	2500 * 2800 * 2800 h	4-8