

KP H

HYDROCARBON SOLVENT VACUUM CLEANING MACHINES

The cleaning machines of the KP H series use AIII class hydrocarbon solvents which are an effective and valid alternative to chlorinated solvents because of their limited environmental impact.



Thanks to their vacuum-sealed washing cycle to – 999 mbar, their great flexibility of use, the superb equipment as standard and the wide range of available accessories, the cleaning machines of the KP H series ensure compliance with the most stringent regulations and the best quality results on the goods treated.

The future cleaning . Now

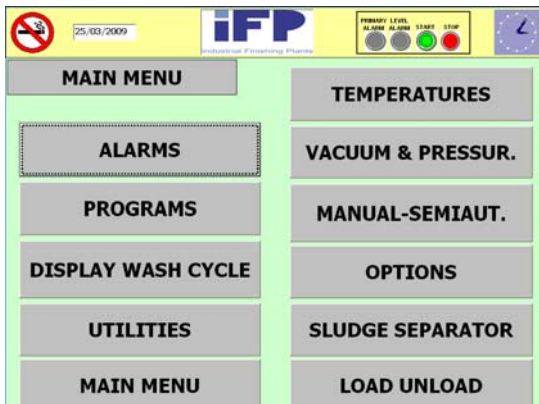
The logo for iFP, consisting of the letters 'iFP' in a bold, blue, sans-serif font. The 'i' is lowercase, and 'FP' are uppercase.

KP H

HYDROCARBON SOLVENT VACUUM CLEANING MACHINES

Standard equipment

- Construction totally in stainless steel
- Vacuum-sealed system
- High pressure spraying pumps
- Cryogenic trap system
- Coarse filter
- Two solvent tanks
- Touch screen control panel
- Internet remote service



Available accessories

- Solvent third tank
- Rust inhibitor tank
- High pressure spraying pumps
- Ultrasound transducers
- Additional filters
- Sludge separator
- Automatic closing door
- Automatic loads feeding systems
- Video service via internet

Main characteristics

- Wholly vacuum-sealed treatment
- Continuous solvent filtration
- Continuous distillation
- Continuous emulsion separation
- Continuous separation of the distillation sludge
- Constant survey of operating conditions
- Easy access to components for maintenance



Applications

Turned parts
 Pressed and bent parts
 Diecasted and machined parts
 Springs
 Hydraulic parts
 Valves
 Taps and Fittings
 Return bends and manifolds
 Heat exchangers
 Automotive
 Sintered parts
 Watch making
 Jewellery
 Medical



Model	Load dimensions (mm)	Load weight (kg)	Overall dimensions (mm)	Cycles/hour
KP 20	150 * 250 * 130 h	20	1200 * 1200 * 1800 h	4-8
KP 50	450 * 300 * 200 h	50	1800 * 1800 * 2300 h	4-8
KP 100	450 * 600 * 200 h	100	1900 * 2200 * 2800 h	4-8
KP 150	450 * 900 * 200 h	150	2400 * 2200 * 2800 h	4-8
KP 200	450 * 1200 * 200 h	200	2400 * 2400 * 2800 h	4-8
KP 400	450 * 1200 * 400 h	400	2500 * 2800 * 2800 h	4-8